

TDJ-5158BKT2

Flat Panel Antenna

Technical Sheet



Applications

- 5.1/5.5/5.8GHz WLAN
- Wireless Access systems
- 5.8GHz ISM applications
- IEEE802.11a,g
- WiFi
- Wireless Bridges
- Client Antenna

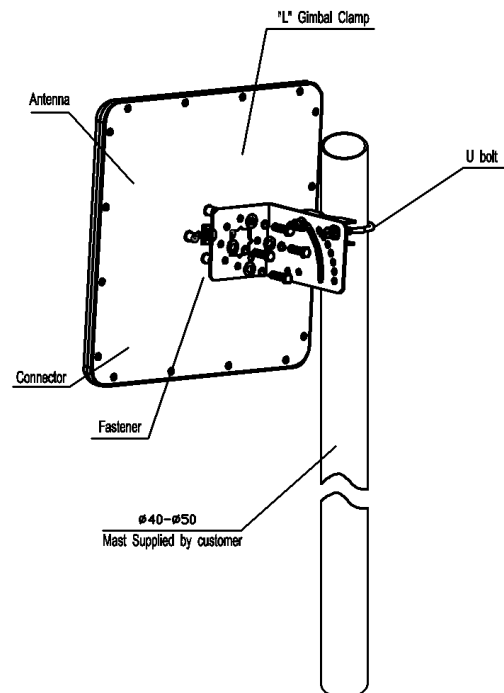
Features

- 5.1/5.5/5.8GHz Tri-band
- High gain
- Low profile
- Light weight
- All weather operation
- DC Ground for lightning protection
- Supplied with a tilt and swivel mast mount kit

Specifications

Model	TDJ-5158BKT2
Freq. Range-MHz	5150~5850
Gain-dBi	≥23
Beamwidth-°	E:11 H:11
VSWR	≤1.5
Impedance-Ω	50
Polarization	Vertical or Horizontal
Max. Power-W	50
Connector Type	N-Female
Dimension-mm	306×306×25
Weight-Kg	1.4(with brackets)
Color	White
Mounting Way	Mast Pole

Install Sketch



Kenbotong Communication LTD.

Addr: kenbotong Technology Park, NO.2 Chanxiu Road, Foshan, Guangdong, China 528000
 Tel: +86-757-82219788, 82126632 Fax: +86-757-82212072
 Email: kbt@kenbotong.com web: <http://www.kenbotong.com>