

TDJ-3500BKC16

3.5GHz Broadband Flat Panel

Antenna

Technical Sheet



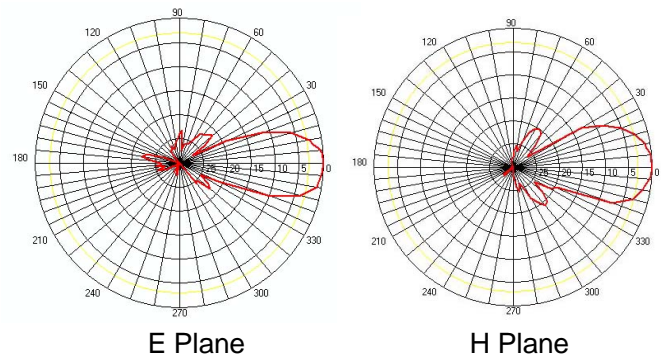
Applications

- 3.5GHz Fixed Wireless Access System
- WiMax
- Support 802.16 Series Standard
- LMDS

Features

- Broad band, High gain, Low VSWR
- Light weight, Small size, Firm structure
- Supplied with mast mounting kit

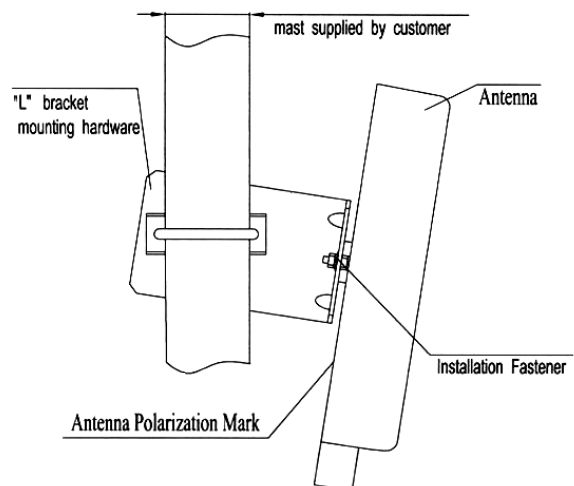
Reference Patterns



Specification

Model	TDJ-3500BKC16
Freq.Range-MHz	3400 to 3600
Bandwidth-MHz	200
Gain-dBi	16
Beamwidth-°	E:24 H:30
F/B Ratio-dB	≥30
VSWR	≤1.5
Impedance-Ω	50
Polarization	Vertical or Horizontal
Max.Power-W	100
Connector	N female or customized
Dimensions-mm	220×190×45
Weight-Kg	1.5
Mast Diameter-mm	40 to 50

Installation Sketch



Installation Method:

1. Install the L bracket to the back of the panel antenna, and then fix the antenna to the mast supplied by customer according to the sketch map.
2. Use the instrument to test the receiving signals and adjust the antenna azimuth and pitching angle to make the receiving signals maximum. Fasten every nut, and seal the connector which connect the antenna and cable.



Kenbotong Communication LTD

Addr : Kenbotong Technology Park, No.2 Chanxiu Road, Foshan, Guangdong, China 528061

Tel: +86-757-82219788, 82126632 Fax: +86-757-82212072

Email: kbt@kenbotong.com web: <http://www.kenbotong.com>