

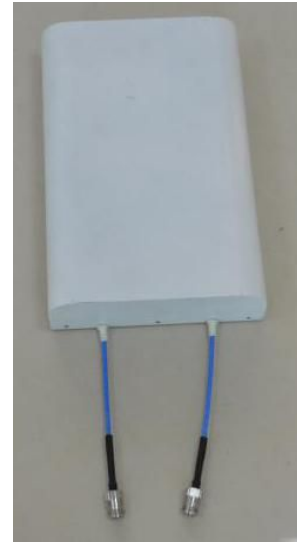


Wide-band Panel	880~960	1710~2690
Dual Polarization	X	X
Half-power Beam Width	75°±10°	70°±10°
Electrical Downtilt	0°	0°

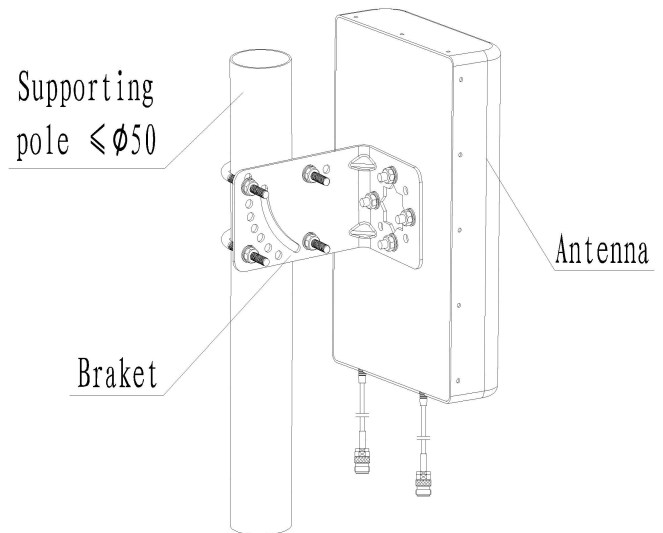
XPoI 880~960/1710~2690MHz 75°/70° 7/8dBi

Electrical specifications	TDJ-X0927BFG-M	
Frequency range (MHz)	880~960	1710~2690
Polarization	±45°	
Gain (dBi)	2×7.5	2×8
Electrical Downtilt (°)	0	0
Half-power beam width (°)	Horizontal:75±10 Vertical:70±10	Horizontal:70±10 Vertical:50±10
Front-to-back ratio (dB)	≥15	≥25
Isolation (dB)	≥22	
Impedance (Ω)	50	
VSWR	≤1.5	≤1.5
Intermodulation IM3 (2×33dBm carrier)	≤-100dBm	
Maximum power (W)	50	
Lighting protection	DC Ground	
Mechanical specifications		
Connector	N Female	
Connector position	Bottom	
Height/width/depth (mm)	325*205*70	
Weight (kg)	1	
Radome material	ABS	
Radome color	White	
Mechanical tilt (°)	0	
Mounting Way	Mast Mount	
Operating temperature (°C)	-40~60	
Rated wind velocity (m/s)	60	

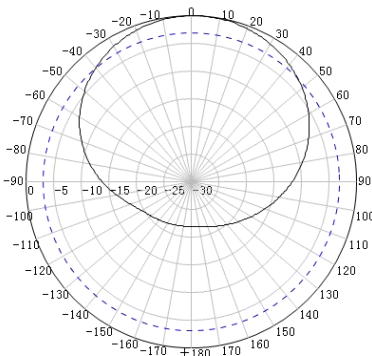
Note: 165mm pigtail



Notes: The picture is for reference only, please kindly consult with the real product.



880~960MHz:
±45° Polarization



1710~2690MHz:
±45° Polarization

