

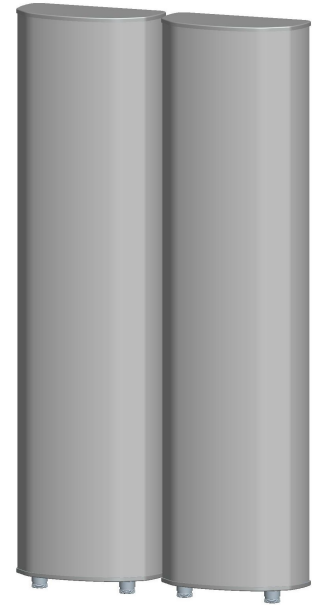


Kenbotong Technology Co., Ltd.

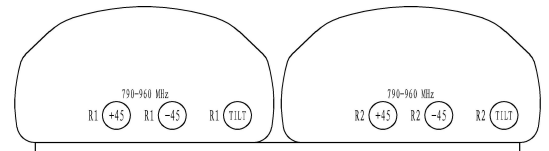
2X Wide-band Panel	790~960	790~960
Dual Polarization	X	X
Half-power Beam Width	65°	65°
Variable Electrical Downtilt	0°-15°	0°-15°

XXPo1 790~960MHz 65° 15dBi 0° -15° Tilt

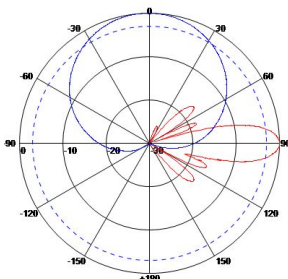
Electrical specifications	KBT65DP1515-0809CE	
Frequency range (MHz)	790~896	870~960
Polarization	±45°	
Gain (dBi)	4×14.5	4×15
Electrical Downtilt (°)	0~15	
Half-power beam width (°)	Horizontal:66 Vertical:14.5	Horizontal:64 Vertical:14
Sidelobe suppression for first sidelobe above main beam (dB)	0°...5°...10°...15° 16...15...15...15	
Front-to-back ratio (dB)	≥25	
Cross-polar discrimination (dB)	≥15(±60°≥10)	
Isolation (dB)	≥30	
Impedance (Ω)	50	
VSWR	≤1.5	
Intermodulation IM3 (2×43dBm carrier)	≤-150dBc	
Maximum power (W)	400	
Lighting protection	DC Ground	



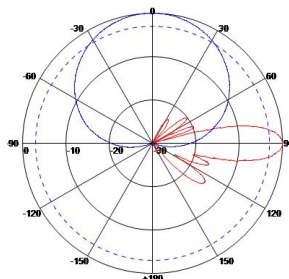
Mechanical specifications	
Connector	4×7/16DIN Female
Connector position	Bottom
Height/width/depth (mm)	1360×568×145
Packing size (mm)	1620×680×250
Weight (kg)	29.8
Radome material	UPVC
Radome color	Gray
Mechanical tilt (°)	0~10
Operating temperature (°C)	-40~60
Rated wind velocity (m/s)	60
Suitable pole diameter (mm)	50~115
Mounting kit	JM-900BZ2
Electrical downtilt adjustment	Manual or by optional RCU



790~896MHz: ±45° Polarization



870~960MHz: ±45° Polarization



5.39.6.4585

Kenbotong reserves the right to change specifications without prior notice.

Addr: No.2 Chanxiu Road, Foshan City, Guangdong, China. 528061

Tel:+86-757-82219788, 82126632 Fax:+86-757-82212072

Email: kbt@kenbotong.com Web:<http://www.kenbotong.com>