

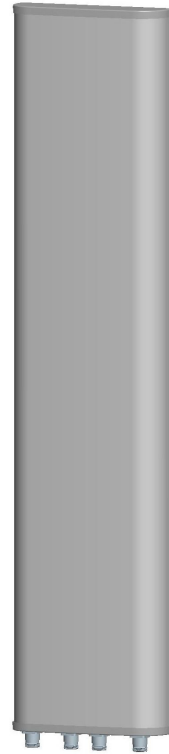


Kenbotong Technology Co., Ltd.

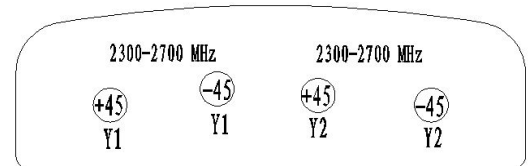
2X Multi-band Panel	2300~2700	2300~2700
Dual Polarization	X	X
Half-power Beam Width	65°	65°
Fixed Electrical Downtilt	2°	2°

XXPol 2300~2700MHz 65° 18dBi 2° Tilt

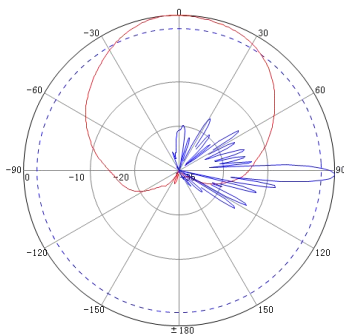
Electrical specifications	KBT65DP1818-2327AT2	
Frequency range (MHz)	2300~2500	2500~2700
Polarization	±45°	
Gain (dBi)	4×18	
Electrical Downtilt (°)	2	
Half-power beam width (°)	Horizontal:68 Vertical:5.5	Horizontal:65 Vertical:5
Sidelobe suppression for first sidelobe above main beam (dB)	≥15	
Front-to-back ratio (dB)	≥25	
Cross-polar discrimination (dB)	≥15(±60°≥10)	
Isolation (dB)	≥30	
Impedance (Ω)	50	
VSWR	≤1.5	
Intermodulation IM3 (2×37dBm carrier)	≤-150dBc	
Maximum power (W)	200	
Lighting protection	DC Ground	



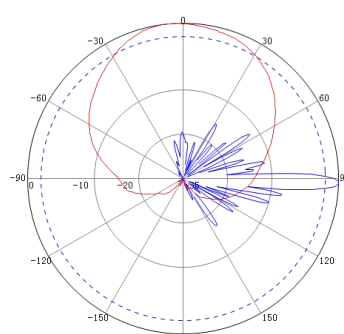
Mechanical specifications	
Connector	4×N Female
Connector position	Bottom
Height/width/depth (mm)	1250×285×90
Packing size (mm)	1540×390×175
Weight (kg)	14
Radome material	UPVC
Radome color	Gray
Mechanical tilt (°)	0~15
Operating temperature (°C)	-40~60
Rated wind velocity (m/s)	60
Suitable pole diameter (mm)	50~115
Mounting kit	JM-900CZ



2300~2500MHz: ±45° Pol.



2500~2700MHz: ±45° Pol.



5.39.6.4911

Kenbotong reserves the right to change specifications without prior notice.

Addr: No.2, Chanxiu Road. Foshan , Guangdong, China. 528061

Tel:+86-757-82219788, 82126632 Fax:+86-757-82212072

Email: kbt@kenbotong.com Web:<http://www.kenbotong.com>