

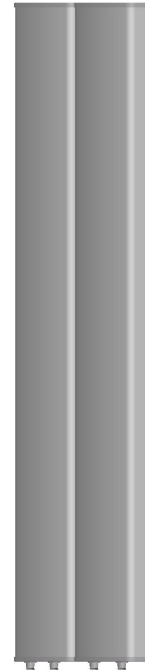


Kenbotong Technology Co., Ltd.

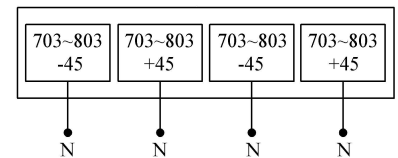
2X Multi-band Panel	703~803	703~803
Dual Polarization	X	X
Half-power Beam Width	65°	65
Fixed Electrical Downtilt	0°	0°

XXPol 703~803MHz 65° 14.5dBi 0° Tilt

Electrical specifications	KBT65DP1515-07RT0
Frequency range (MHz)	703~803
Polarization	±45°
Gain (dBi)	4×14.5
Electrical Downtilt (°)	0
Half-power beam width (°)	Horizontal:66 Vertical:15
Sidelobe suppression for first sidelobe above main beam (dB)	≥15
Front-to-back ratio (dB)	≥25
Cross-polar discrimination (dB)	≥15(±60°≥10)
Isolation (dB)	≥28
Impedance (Ω)	50
VSWR	≤1.5
Maximum power (W)	200
Lighting protection	DC Ground



Mechanical specifications	
Connector	4×N Female
Connector position	Bottom
Height/width/depth (mm)	1320×570×85
Packing size (mm)	1600×680×190
Weight (kg)	21
Radome material	UPVC
Radome color	Gray
Mechanical tilt (°)	0~10
Operating temperature (°C)	-40~60
Rated wind velocity (m/s)	60
Suitable pole diameter (mm)	50~115
Mounting kit	JM-900BZ2



703~803MHz: ±45° Pol.

