

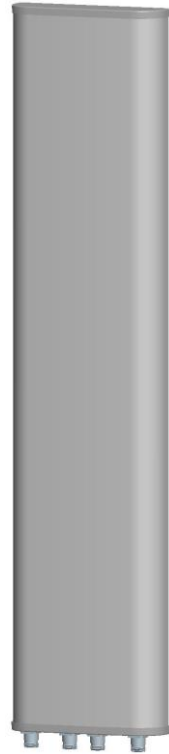


Kenbotong Technology Co., Ltd.

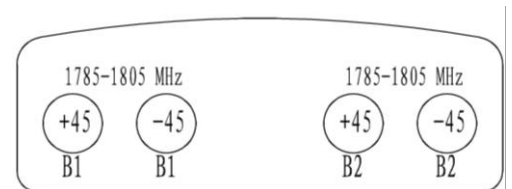
2X Single-band Panel	1785~1805	1785~1805
Dual Polarization	X	X
Half-power Beam Width	60°	60°
Fixed Electrical Downtilt	0°	0°

XXPol 1785~1805MHz 60° 17dBi 0° Tilt

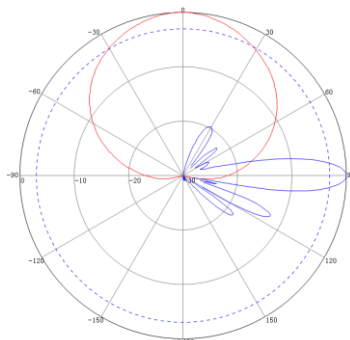
Electrical specifications	KBT65DP1717-1820RT0
Frequency range (MHz)	1785~1805
Polarization	±45°
Gain (dBi)	4×17
Electrical Downtilt (°)	0
Half-power beam width (°)	Horizontal:60 Vertical:9.5
Sidelobe suppression for first sidelobe above main beam (dB)	≥15
Front-to-back ratio (dB)	≥28
Cross-polar discrimination (dB)	≥15(±60°≥10)
Isolation (dB)	≥30
Impedance (Ω)	50
VSWR	≤1.5
Maximum power (W)	200
Lighting protection	DC Ground



Mechanical specifications	
Connector	4×N Female
Connector position	Bottom
Height/width/depth (mm)	1100×320×110
Packing size (mm)	1370×410×240
Weight (kg)	14.5
Radome material	UPVC
Radome color	Gray
Mechanical tilt (°)	0~15
Operating temperature (°C)	-40~60
Rated wind velocity (m/s)	60
Suitable pole diameter (mm)	50~115
Mounting kit	JM-900CZ



1785~1805MHz: ±45° Pol.



5.39.6.4703

Kenbotong reserves the right to change specifications without prior notice.

Addr: No.2, Chanxiu Road. Foshan , Guangdong, China. 528061

Tel:+86-757-82219788, 82126632 Fax:+86-757-82212072

Email: kbt@kenbotong.com Web:<http://www.kenbotong.com>