

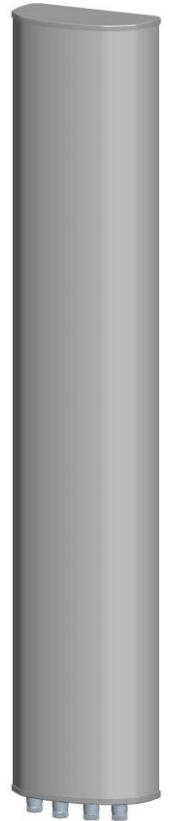


Kenbotong Technology Co., Ltd.

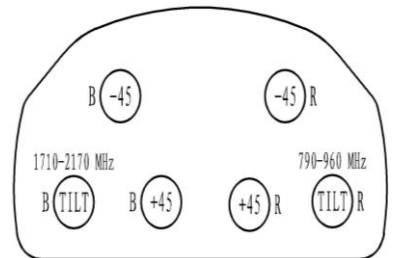
Multi-band Panel	790~960	1710~2170
Dual Polarization	X	X
Half-power Beam Width	65°	65°
Variable Electrical Downtilt	0°-14°	0°-15°

XXPo1 790~960/1710~2170MHz 65° 15/15dBi 0° -14° /0° -15° Tilt

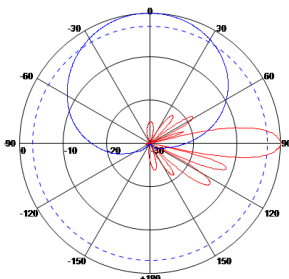
Electrical specifications	KBT65DP1515-0820BE				
	790~896	870~960	1710~1880	1850~1990	1920~2170
Frequency range (MHz)	790~896	870~960	1710~1880	1850~1990	1920~2170
Polarization	±45°				
Gain (dBi)	2×14.3	2×14.5	2×14	2×14.2	2×14.5
Electrical Downtilt (°)	0~14		0~15		
Half-power beam width (°)	Hor.:67 Ver.:13	Hor.:65 Ver.:12	Hor.:62 Ver.:13	Hor.:60 Ver.:12	Hor.:60 Ver.:12
Sidelobe suppression for first sidelobe above main beam (dB)	0°...7°...14° 15...15...15		0°...8°...15° 15...15...15		
Front-to-back ratio (dB)	≥25		≥25		
Cross-polar discrimination (dB)	≥15(±60°≥10)		≥15(±60°≥10)		
Isolation (dB)	≥28		≥28		
Impedance (Ω)	50				
VSWR	≤1.5		≤1.5		
Intermodulation IM3 (2×43dBm carrier)	≤-150dBc				
Maximum power (W)	400		200		
Lighting protection	DC Ground				



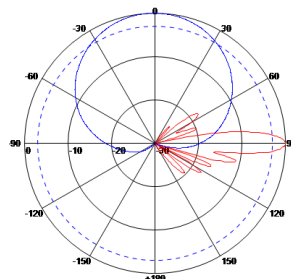
Mechanical specifications	
Connector	4×7/16DIN Female
Connector position	Bottom
Height/width/depth (mm)	1600×270×137
Packing size (mm)	1870×380×230
Weight (kg)	18
Radome material	UPVC
Radome color	Gray
Mechanical tilt (°)	0~10
Operating temperature (°C)	-40~60
Rated wind velocity (m/s)	60
Suitable pole diameter (mm)	50~115
Mounting kit	JM-900CZ
Electrical downtilt adjustment	Manual or by optional RCU



790~960MHz: ±45° Pol.



1710~2170MHz: ±45° Pol.



5.39.6.4886

Kenbotong reserves the right to change specifications without prior notice.

Addr: No.2 Chanxiu Road, Foshan City, Guangdong, China. 528061

Tel:+86-757-82219788, 82126632 Fax:+86-757-82212072

Email: kbt@kenbotong.com Web:<http://www.kenbotong.com>