

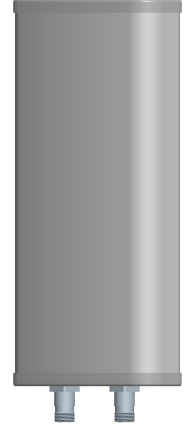


Kenbotong Technology Co., Ltd.

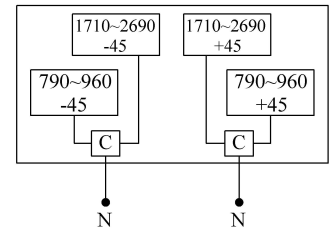
Multi-band Panel	790~960	1710~2690
Dual Polarization	X	X
Half-power Beam Width	65°	65°
Fixed Electrical Downtilt	0°	0°

XPo1 790~960/1710~2690MHz IC 65° 12/14dBi 0° /0° Tilt

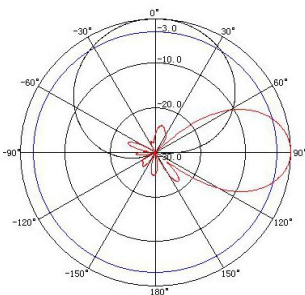
Electrical specifications	KBT65DP1214-0827RT0-C			
Frequency range (MHz)	790~896	870~960	1710~2200	2200~2690
Polarization	±45			
Gain (dBi)	2×11	2×11.5	2×14	2×14.5
Electrical Downtilt (°)	0			
Half-power beam width (°)	Horizontal:67 Vertical:32	Horizontal:64 Vertical:30	Horizontal:65 Vertical:15	Horizontal:62 Vertical:14
Sidelobe suppression for first sidelobe above main beam (dB)	N/A			
Front-to-back ratio (dB)	≥23		≥25	
Impedance (Ω)	50			
VSWR	≤1.5			
Isolation (dB)	≥27	≥30	≥28	
Maximum power (W)	400		200	
Lighting protection	DC Ground			



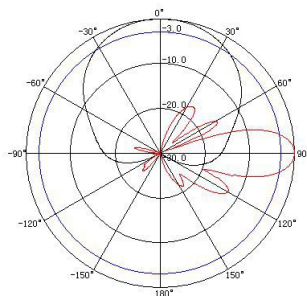
Mechanical specifications	
Connector	2×N Female
Connector position	Bottom
Height/width/depth (mm)	1085×280×85
Packing size (mm)	1180×380×200
Weight (kg)	9
Radome material	UPVC
Radome color	Gray
Mechanical tilt (°)	0~14
Operating temperature (°C)	-40~60
Rated wind velocity (m/s)	60
Suitable pole diameter (mm)	50~75
Mounting kit	JM-VA1



790~960MHz: ±45 Pol.



1710~2200MHz: ±45 Pol.



2200~2690MHz: ±45Pol.

