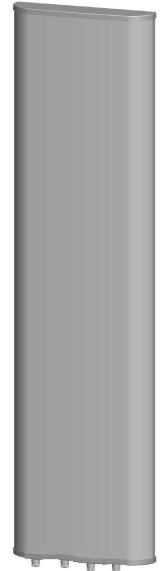


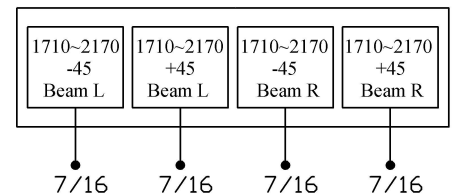


XXPo1 1710~2170MHz 37° 20dBi 0° -10° Tilt

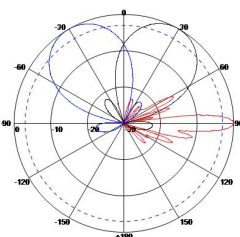
Electrical specifications	KBT30DP2020-1820BE-JF		
Frequency range (MHz)	1710~1880	1850~1990	1900~2170
Polarization	2×±45°		
Gain (dBi)	4×19.2	4×19.5	4×19.9
Electrical Downtilt (°)	0~10		
Half-power beam width (°)	Horizontal:40 Vertical: 7	Horizontal:37 Vertical:6.8	Horizontal:33 Vertical:6.5
Horizontal beam points (°)	-30, +30		
Sidelobe suppression for first sidelobe above main beam (dB)	0°...5°...10° 15...15...15		
Front-to-back ratio (dB)	≥25		
Isolation (dB)	≥28		
Cross-polar ratio(dB)	≥15(main direction)		
Impedance (Ω)	50		
VSWR	≤1.5		
Intermodulation IM3 (2×43dBm carrier)	≤-150dBc		
Maximum power (W)	200		
Lighting protection	DC Ground		



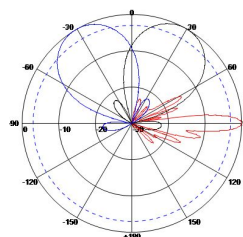
Mechanical specifications	
Connector	4×7/16DIN Female
Connector position	Bottom
Height/width/depth (mm)	1260×410×160
Packing size (mm)	1650×500×230
Weight (kg)	22
Radome material	Fiberglass
Radome color	Gray
Mechanical tilt (°)	0~10
Operating temperature (°C)	-40~60
Rated wind velocity (m/s)	60
Suitable pole diameter (mm)	50~115
Mounting kit	JM-900CZ
Electrical downtilt adjustment	Manual or by optional RCU



1710~1880MHz: ±45° Polarization



1850~1990MHz: ±45° Polarization



1900~2170MHz: ±45° Polarization

