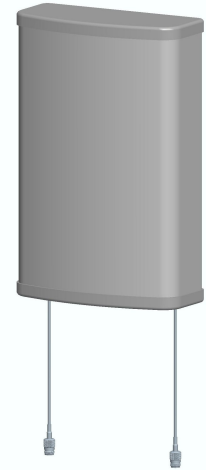


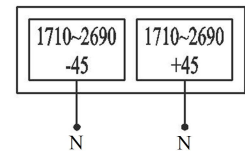


XPo1 1710~2690MHz 33° 14dBi 0° Tilt

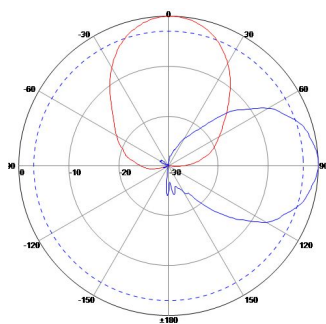
Electrical specifications	KBT30DP14-1727AT0-A		
Frequency range (MHz)	1710~2200	2200~2490	2490~2690
Polarization	±45°		
Gain (dBi)	2×13.5	2×14	2×14.2
Electrical Downtilt (°)	0		
Half-power beam width (°)	Horizontal:38 Vertical:38	Horizontal:35 Vertical:35	Horizontal:28 Vertical:28
Front-to-back ratio (dB)	≥25		
Cross-polar discrimination (dB)	≥15		
Isolation (dB)	≥25		
Impedance (Ω)	50		
VSWR	≤1.5		
Intermodulation IM3 (2×33dBm carrier)	≤-150dBc		
Maximum power (W)	200		
Lighting protection	DC Ground		



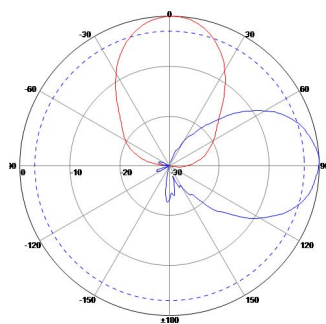
Mechanical specifications	
Connector	2×N Female
Connector position	Bottom
Height/width/depth (mm)	285×280×85
Packing size (mm)	470×360×210
Weight (kg)	3
Radome material	UPVC
Radome color	Gray
Mechanical tilt (°)	0~45
Operating temperature (°C)	-40~60
Rated wind velocity (m/s)	60
Suitable pole diameter (mm)	50~115
Mounting kit	JM-RE



1710~2200MHz: ±45° Pol.



2200~2490MHz: ±45° Pol.



2490~2690MHz: ±45° Pol.

