

TQJ-350Q8

Fiberglass Omni Antenna

Technical Sheet



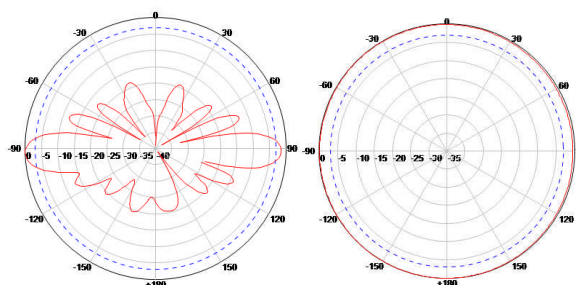
Applications

- 350-375MHz System
- TETRA System
- Multi-point Application

Features

- Superior Performance
- Fiberglass Radome
- All Weather Operation
- Stable Steel Installation Kit

Typical Patterns



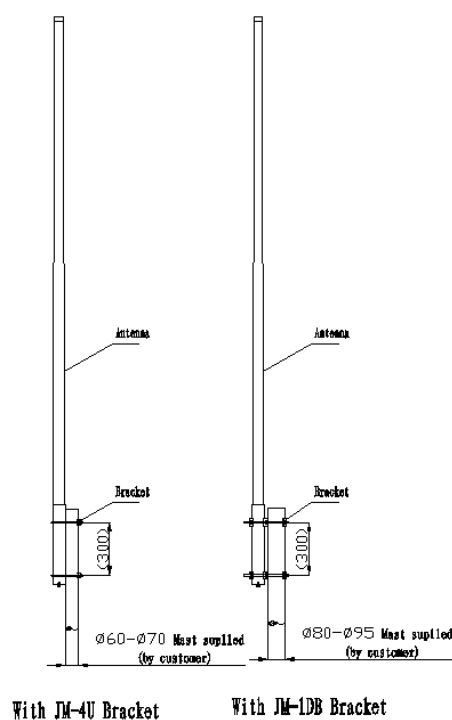
Vertical pattern

Horizontal pattern

Specifications

Model	TQJ-350Q8
Freq.Range-MHz	350-375
Bandwidth-MHz	25
Gain-dBi	8 ± 1
Ver.Beamwidth-°	16
VSWR	≤1.5
Impedance-Ω	50
Polarization	Vertical
Max.Power-W	500
Lightning Protection	DC Grounded
Connector	7/16DIN or N Female
Length-mm	Φ70×3205±20
Weight-Kg	5.5±0.2 (exclude the bracket)
Radome	Fiberglass
Pole Diameter-mm	Φ60-Φ70
Pole Diameter-mm	Φ80-Φ95

Installation Sketch



With JM-4U Bracket

With JM-1DB Bracket

