

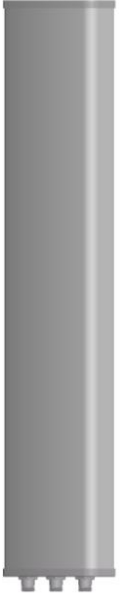


Kenbotong Technology Co., Ltd

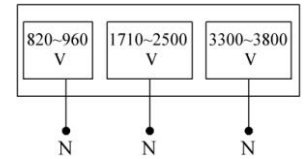
Multi-band Panel	820~960	1710~2500	3300~3800
Vertical Polarization	V	V	V
Half-power Beam Width	65°	65°	65
Fixed Electrical Downfilt	0°	0°	0°

VPo1 820~960/1710~2500/3300~3800MHz 65° 12/14/15dBi 0° Tilt

Electrical specifications	KBT65VP121415-082538RT0				
Frequency range (MHz)	820~960	1710~2200	2200~2500	3300~3500	3500~3800
Polarization	Vertical				
Gain (dBi)	12	14	14.5	15.5	15.5
Electrical Downtilt (°)	0				
Half-power beam width (°)	Horizontal:68 Vertical:30	Horizontal:66 Vertical:16	Horizontal:60 Vertical:13	Horizontal:65 Vertical:10	Horizontal:60 Vertical:9
Sidelobe suppression for first sidelobe above main beam	N/A				
Front-to-back ratio (dB)	≥23	≥23	≥23	≥25	≥25
Impedance (Ω)	50				
VSWR	≤1.5				
Maximum power (W)	400	200		100	
Lighting protection	DC Ground				



Mechanical specifications	
Connector	3×N Female
Connector position	Bottom
Height/width/depth (mm)	1270×280×85
Packing size (mm)	1350×360×180
Weight (kg)	8.5
Radome material	UPVC
Radome color	Gray
Mechanical tilt (°)	0~10
Operating temperature (°C)	-40~60
Rated wind velocity (m/s)	60
Suitable pole diameter (mm)	50~75
Mounting kit	JM-VA1



820~960MHz: V Pol.

1710~2500MHz: V Pol.

3300~3800MHz: V Pol.

